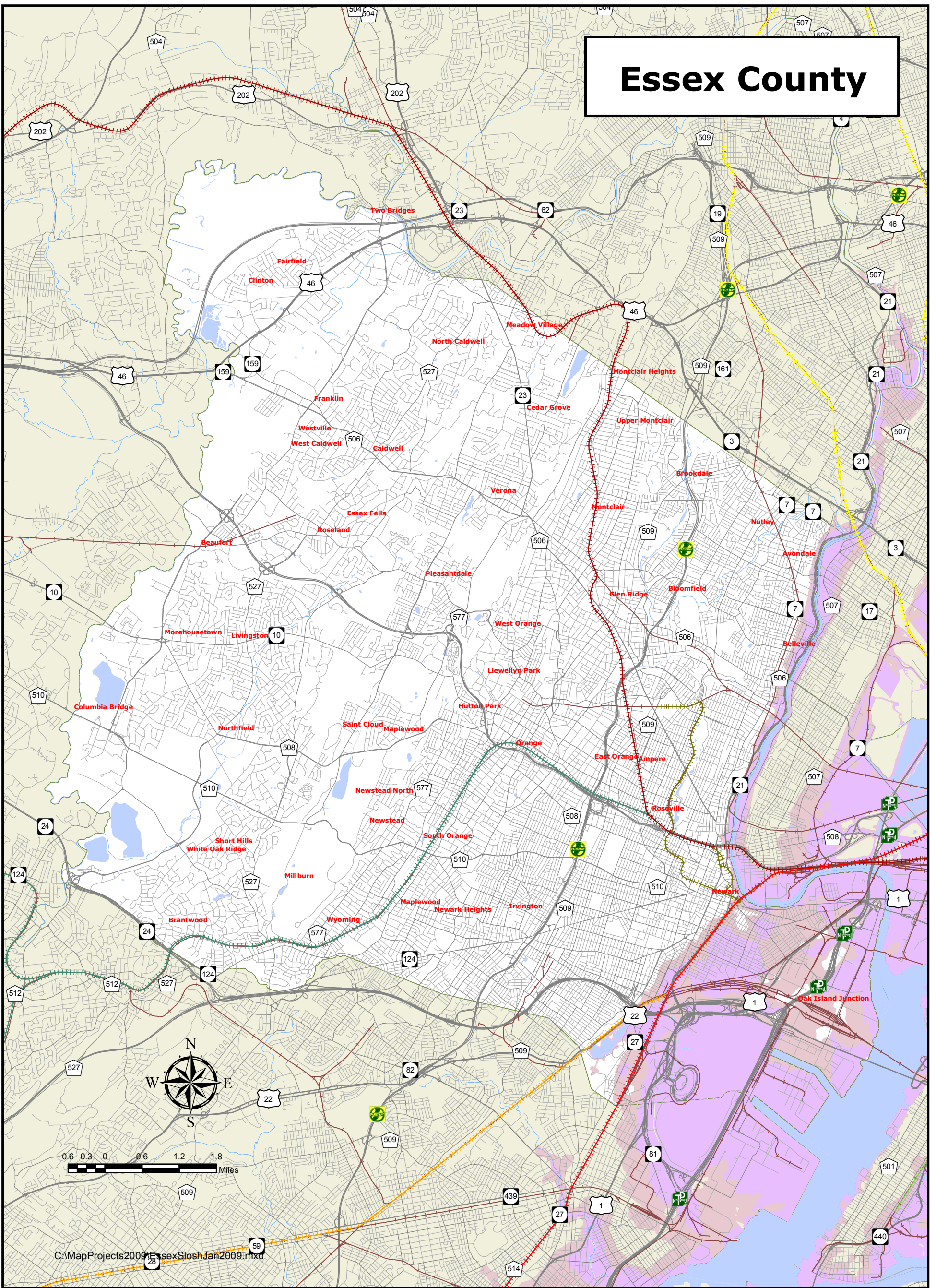


# Essex County





C:\MapProjects\2009\Essex\EssexSloshJan2009.mxd

The U.S. Army Corps of Engineers storm surge data/maps are to be used in combination with other GIS data or satellite imagery to enable managers to plan for major hazards events, and the analysis would only evaluate the vulnerability of an area to hurricane storm surge. This type of analysis would not evaluate the vulnerability of an area to high winds or fresh water flooding. Therefore, the surge data/maps alone should not be used as a tool for determining which areas are susceptible to hurricane hazards. Emergency management personnel may take factors other than storm surge into consideration when they define evacuation zones. Coastal residents should heed evacuation orders and recommendations of emergency management officials when storms threaten.



## Storm Surge/ Hurricane Categories

-  Category 1 and 2
-  Category 3 and 4