

# **SANTA ANA MÁS ECOLOGISTA**

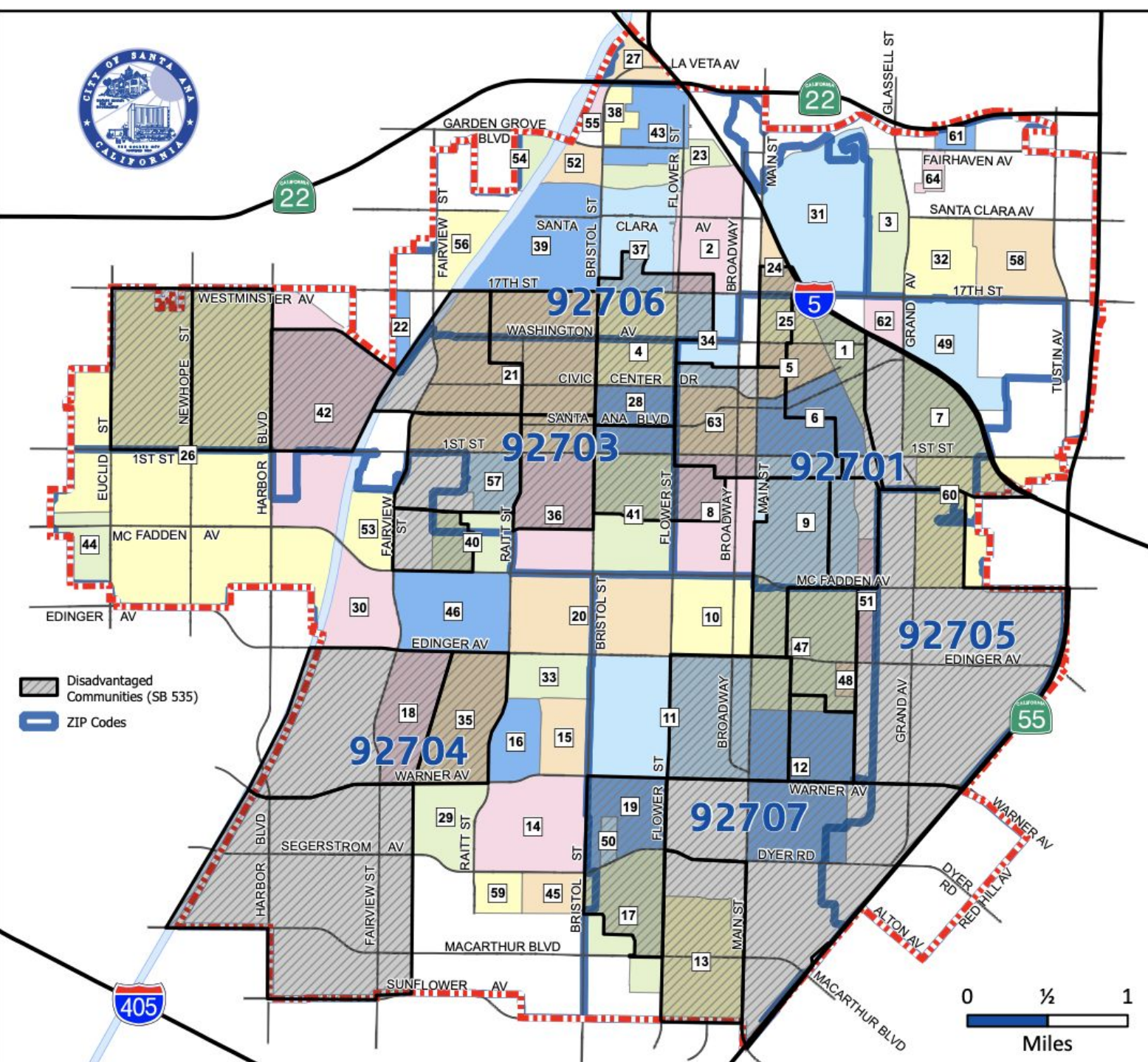
## **Reunión de Partes Interesadas y Campaña 2023**

**GREENING SANTA ANA**  
Stakeholder Meeting and 2023 Campaign

**JANUARY 31, 2023**

Hosted by GREEN-MPNA  
AirUCI EcoGovLab

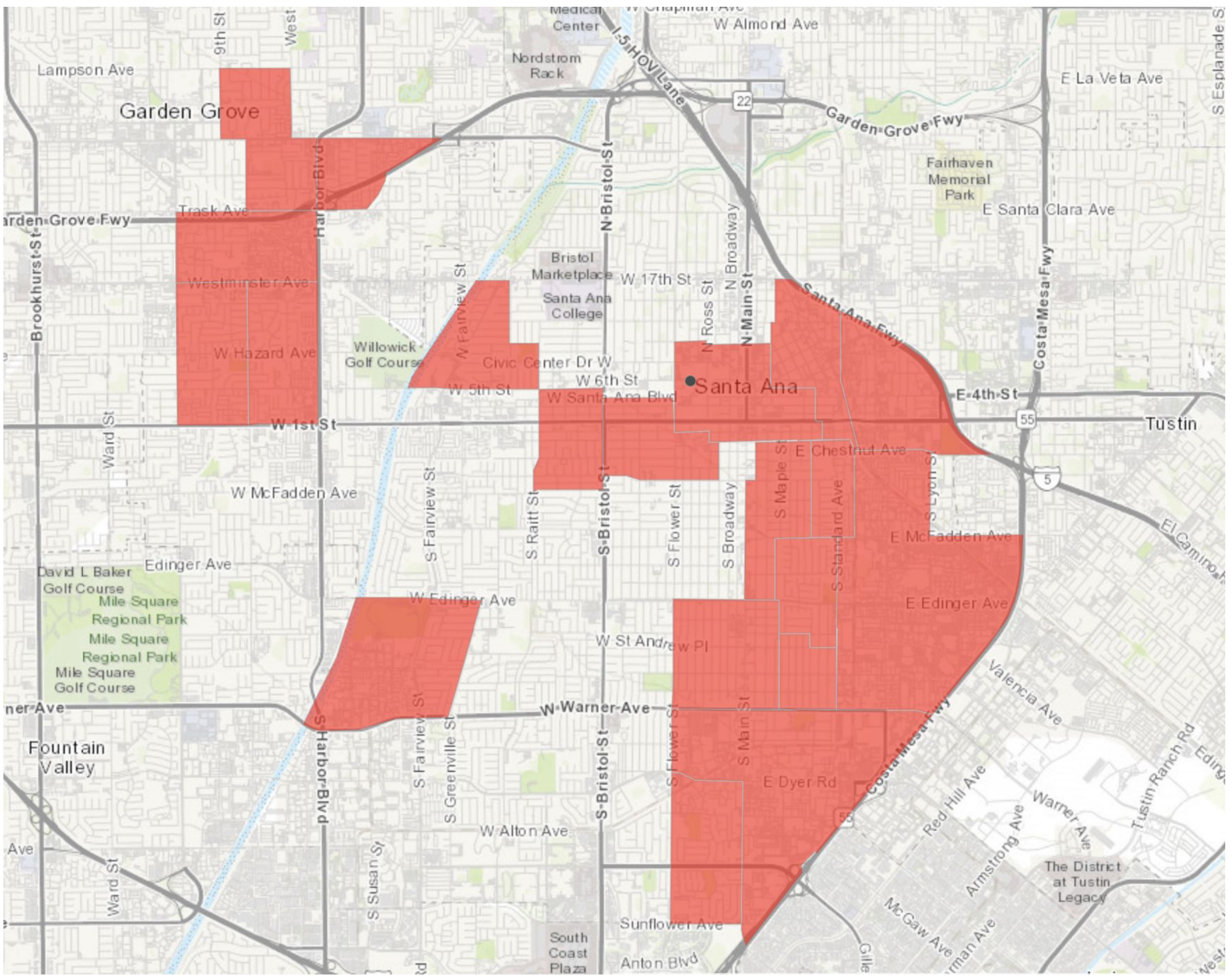




### Santa Ana Neighborhoods and Disadvantaged Communities

SANTA ANA NEIGHBORHOODS				
1. Logan	14. Thornton Park	27. Northwest	39. Riverview	52. Casa De Santiago
2. Floral Park	15. Bristol/Warner	28. Flower Park	40. Bella Vista	53. Windsor Village North
3. Fairhaven	16. Laurelhurst	29. Morning Sunwood	41. Pico-Lowell	54. Concord
4. Washington Square	17. South Coast	30. Windsor Village	42. Santa Anita	55. Riverglen
5. French Park	18. Centennial Park	31. Park Santiago	43. Morrison/Eldridge Park	56. Edna Park
6. Lacy	19. Sunwood Central	32. Portola Park	44. West Grove Valley	57. Casa Bonita
7. Saddleback View	20. Mid-City	33. Shadow Run	45. Republic Homes	58. Meredith Parkwood
8. Heninger Park	21. Artesia Pilar	34. Willard	46. New Horizons	59. Metro Classic
9. Pacific Park	22. Mar-Les	35. Valley Adams	47. Madison Park	60. Lyon Street
10. Wilshire Square	23. Fisher Park	36. Central City	48. Cedar Evergreen Co-Op	61. Fairbridge Square
11. Santa Ana Memorial Park	24. Santa Ana Triangle	37. West Floral Park	49. Mabury Park	62. Grand Sunrise
12. Delhi	25. French Court	38. Bristol Memory Coalition	50. Rosewood Baker	63. Downtown
13. Sandpoint	26. Riverview West		51. Cornerstone Village	64. Young Square

Map Date: 12/21/2022



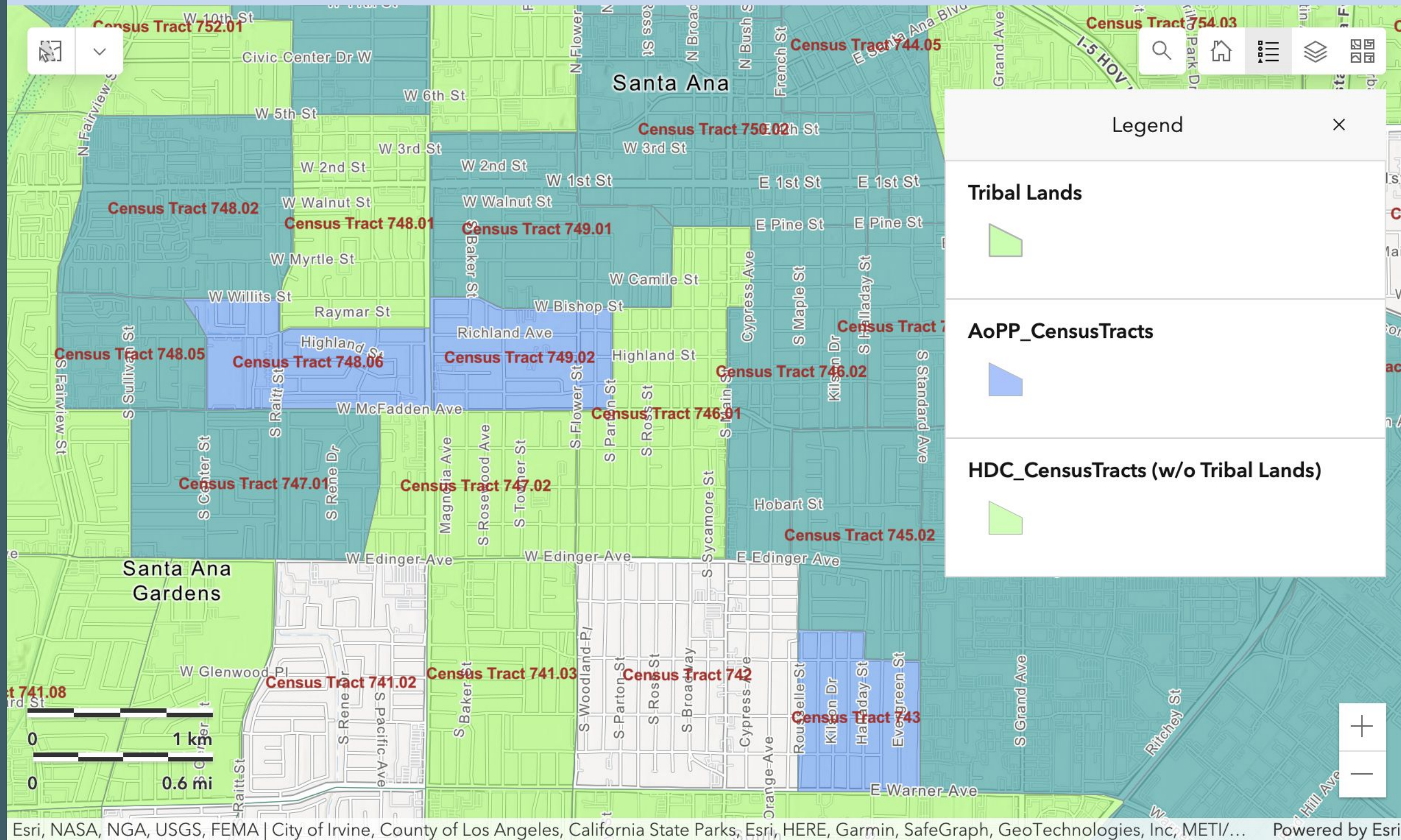
The figure on the left was produced by the City of Santa Ana on December 21, 2022, using data from CalEnviroScreen.

The figure on the right is a screenshot of CalEnviroScreen's current data on Santa Ana's disadvantaged communities.

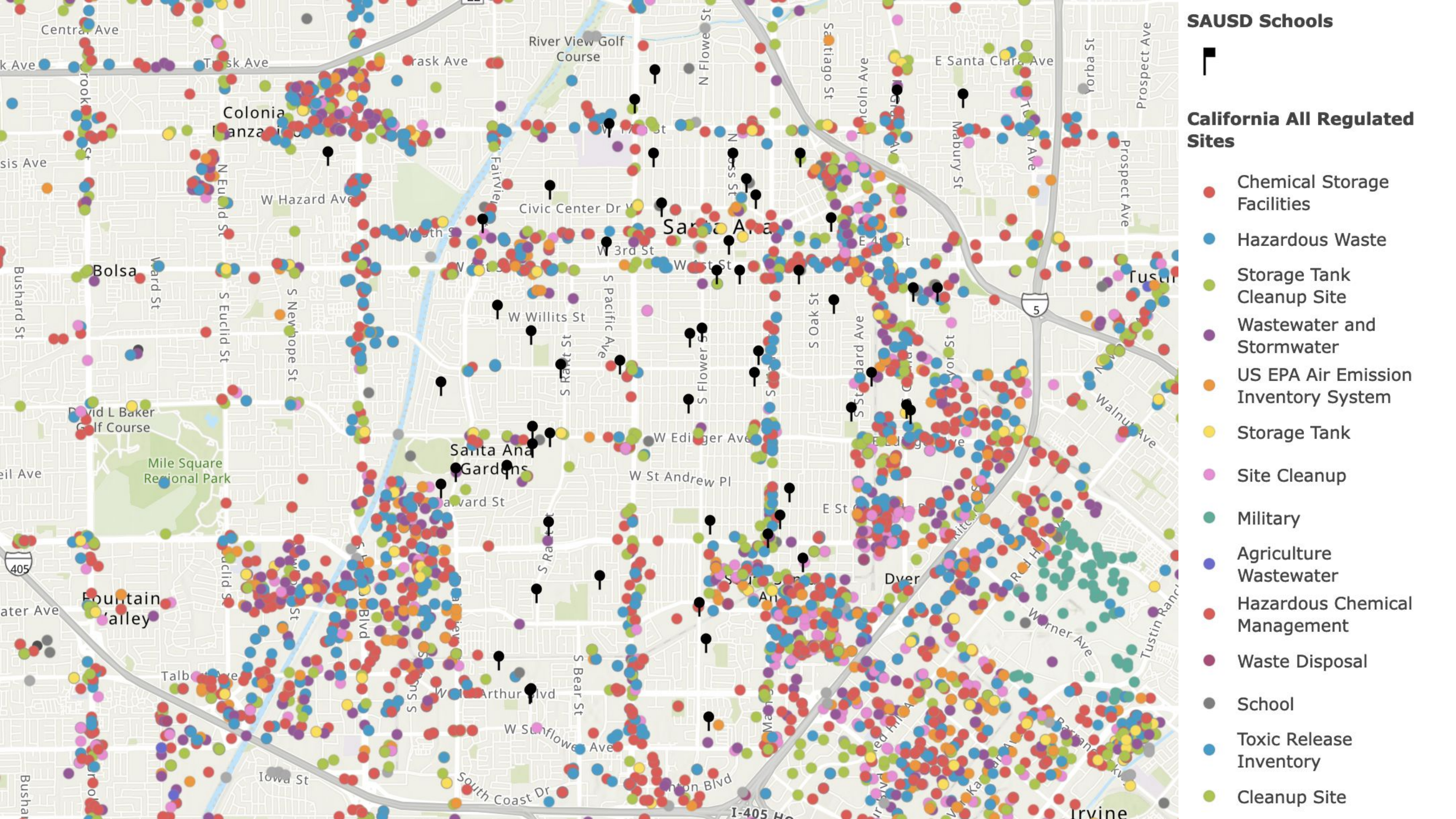


## Area of Persistent Poverty (AoPP) & Historically Disadvantaged Communities (HDC)

**User Instructions:** On the list to the left, select your state; use the +/- icons or mouse wheel to zoom into the map. Click and drag the map area to pan. Use the select tool at the top left of the map to select an area of interest. The number of AoPP, HDC and total Census Tracts within the selected area are shown in boxes below. The list of selected AoPP and HDC Tracts are shown on the list to the right. Zoom-in further or click on the map to read the Census Tract number.







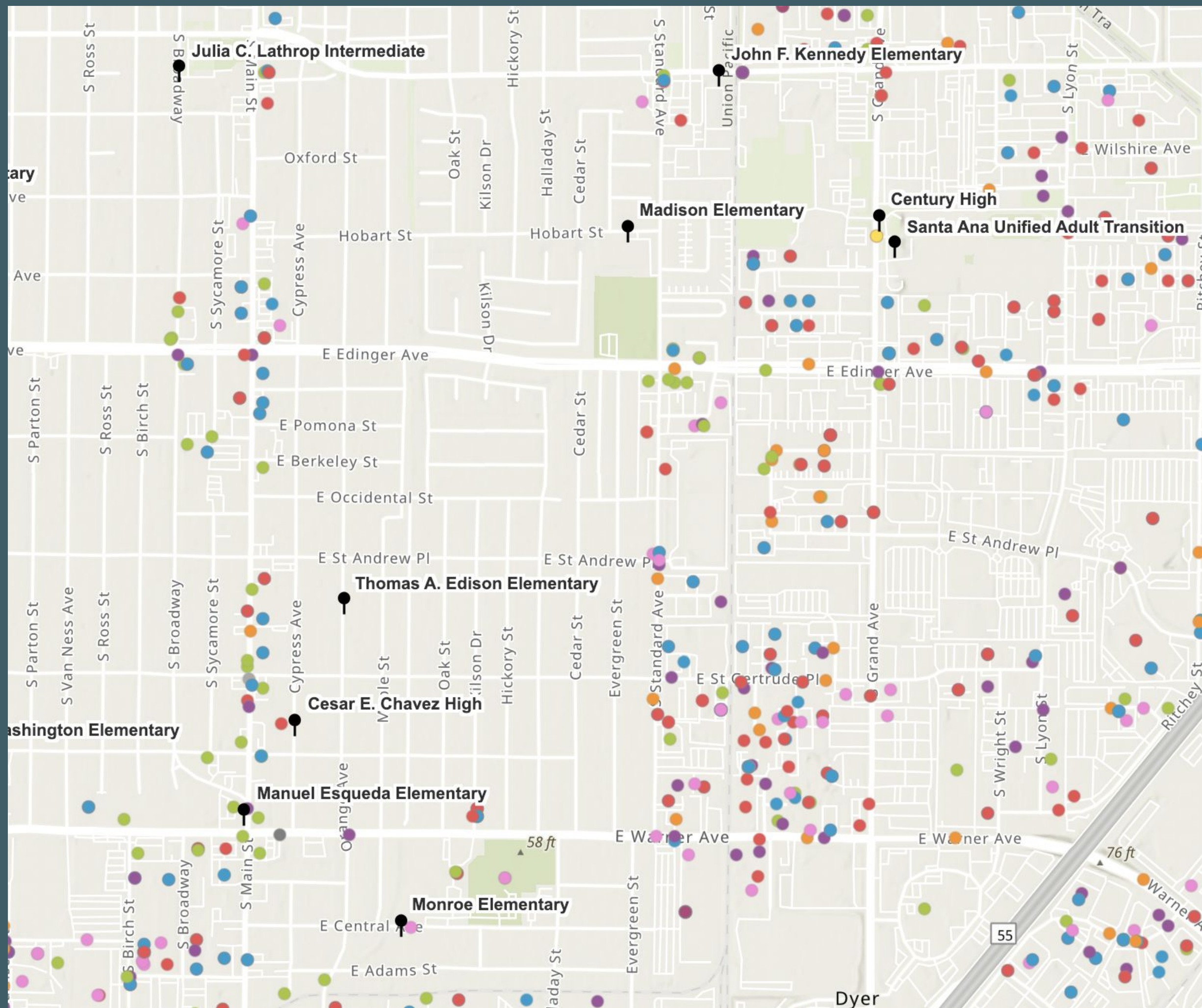
**SAUSD Schools**



**California All Regulated Sites**

- Chemical Storage Facilities
- Hazardous Waste
- Storage Tank Cleanup Site
- Wastewater and Stormwater
- US EPA Air Emission Inventory System
- Storage Tank
- Site Cleanup
- Military
- Agriculture Wastewater
- Hazardous Chemical Management
- Waste Disposal
- School
- Toxic Release Inventory
- Cleanup Site





# of regulated sites  
 within 1 mile  
 Monroe Elementary: 438  
 Century High: 375  
 Madison Elementary: 334  
 Kennedy Elementary: 326



## Resources

[Introduction to Community Air Quality](#)

### Strategy Development

- [Overview of CARB and Air District Strategies](#)
- [Incentive Funding](#)
- [Land Use Resources](#)
- [Transportation Resources](#)
- [CEQA Resources](#)
- [Strategy Snapshots](#)
- [Heavy-Duty Diesel Vehicle Idling Information](#)
- [Pesticide and Fertilizer Information](#)

# Strategy Types



**Rules**



**Facility-Specific Risk Reduction**



**Air Quality Permitting**



**Incentives**



**Enforcement**



**Land Use, Transportation, and Mitigation**



# Santa Ana as a “new” environmental justice community





Home, Map, Layers, Download, Bookmarks, Info, Full Screen icons

Search By Keyword

24 sites found

SITE CITY: Santa Ana  NAICS CODE: 332813

**FAIRCHILD FASTENER GROUP ROSAN**  
3130 WEST HARVARD STREET  
SANTA ANA CA 92704-3937

**ASTECH ENGINEERED PRODUCTS**  
3030 RED HILL AVENUE  
SANTA ANA CA 92705-5823

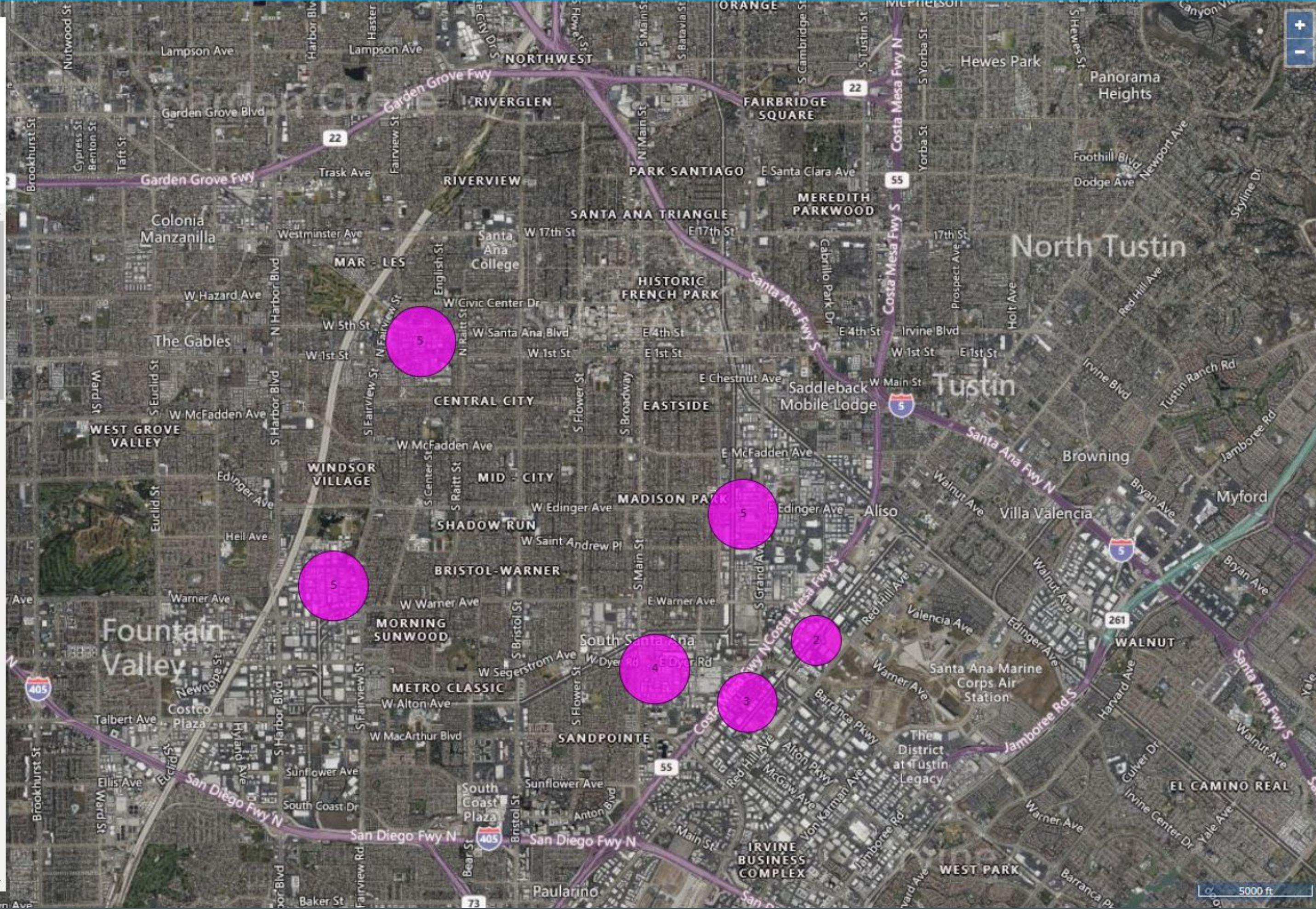
**SPEEDWAY METAL FINISHING**  
1401 E POMONA ST  
SANTA ANA CA 92705-4802

**SANTA ANA PLATING INC**  
411 EAST ALTON STREET  
SANTA ANA CA 92707-4241

**TROY SYSTEMS INC**  
2331 PULLMAN ST  
SANTA ANA CA 92705

**BRASSTECH INC**  
3230 S STANDARD AVE  
SANTA ANA CA 92705-5630

**PRECIOUS METALS PLATING INC**  
2635 ORANGE AVE





- Ozone
- PM2.5
- Diesel Particulate Matter
- Drinking Water Contaminants
- Children's Lead Risk from Housing
- Pesticide Use
- Toxic Releases from Facilities**
- Traffic Impacts

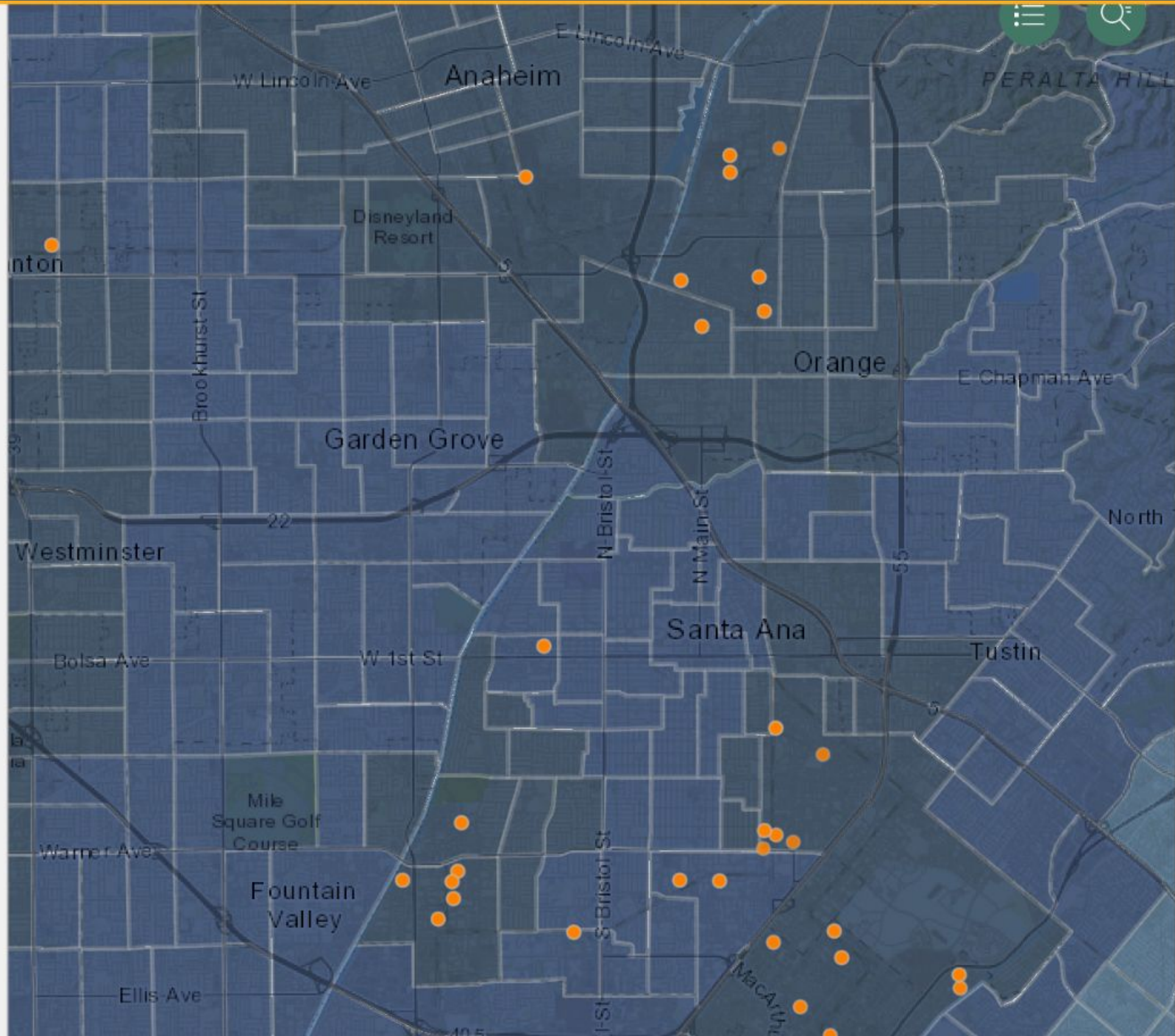


### What are toxic releases?

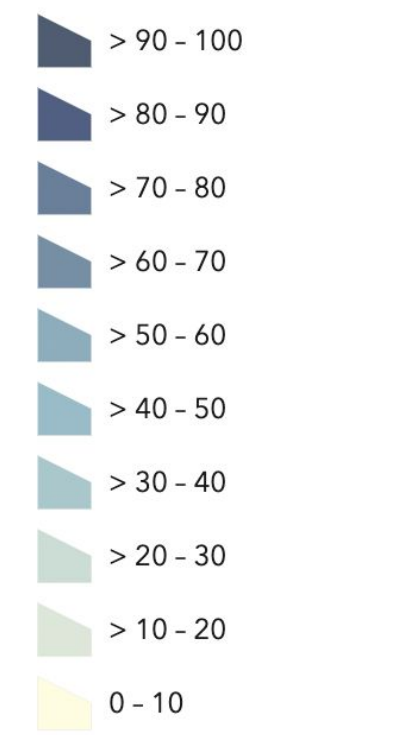
Facilities that make or use toxic chemicals can release these chemicals into the air. **Information is available** on the amount of chemicals released for over 500 chemicals for large facilities in the United States.

These chemicals are sometimes detected in the air of communities nearby. People living near facilities may breathe contaminated air regularly or if contaminants are released during an accident.

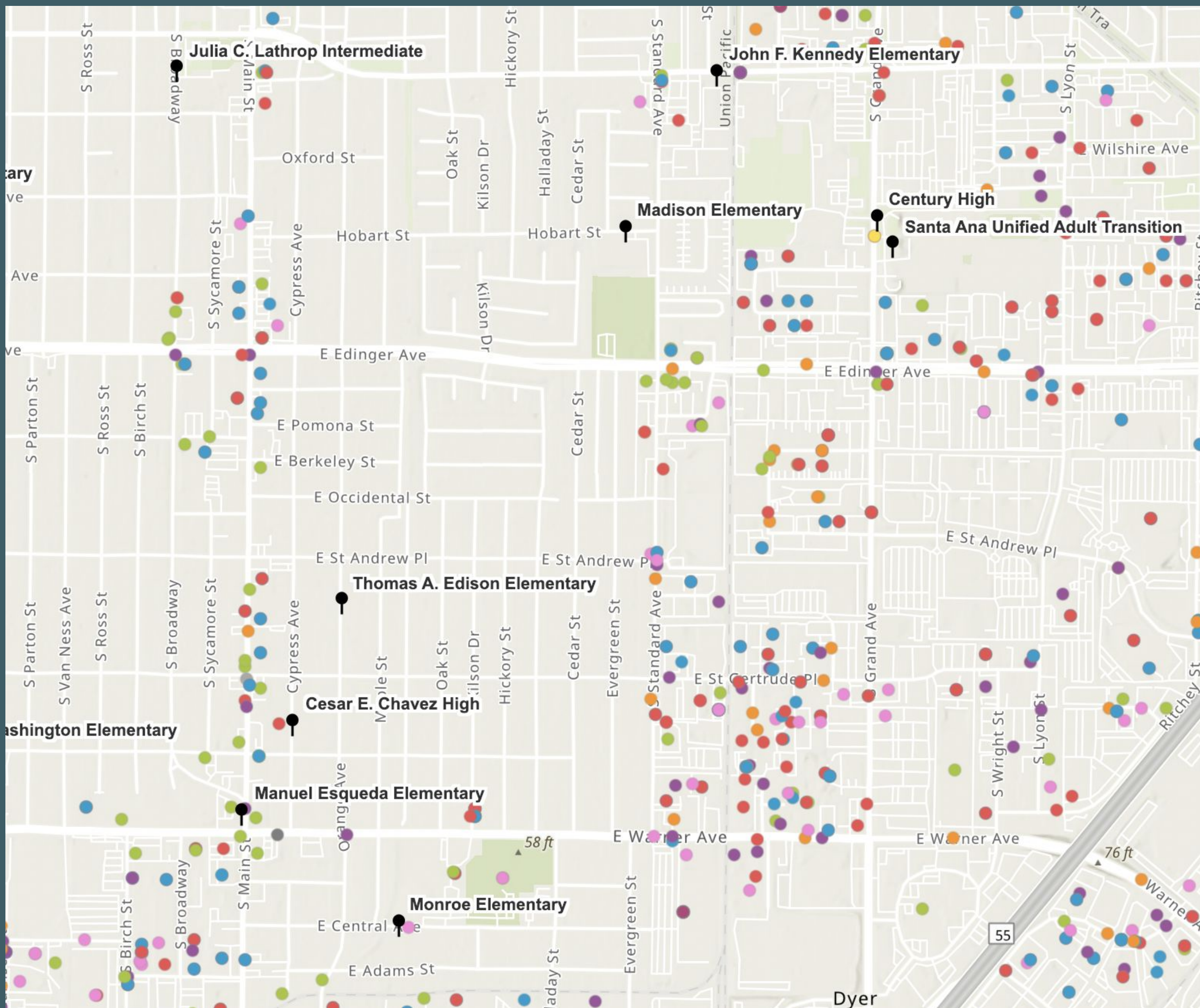
More information can be found in the **Toxic Releases chapter** in the CalEnviroScreen 4.0 report and the **Toxic Releases indicator page**.



#### Toxic Releases Percentile



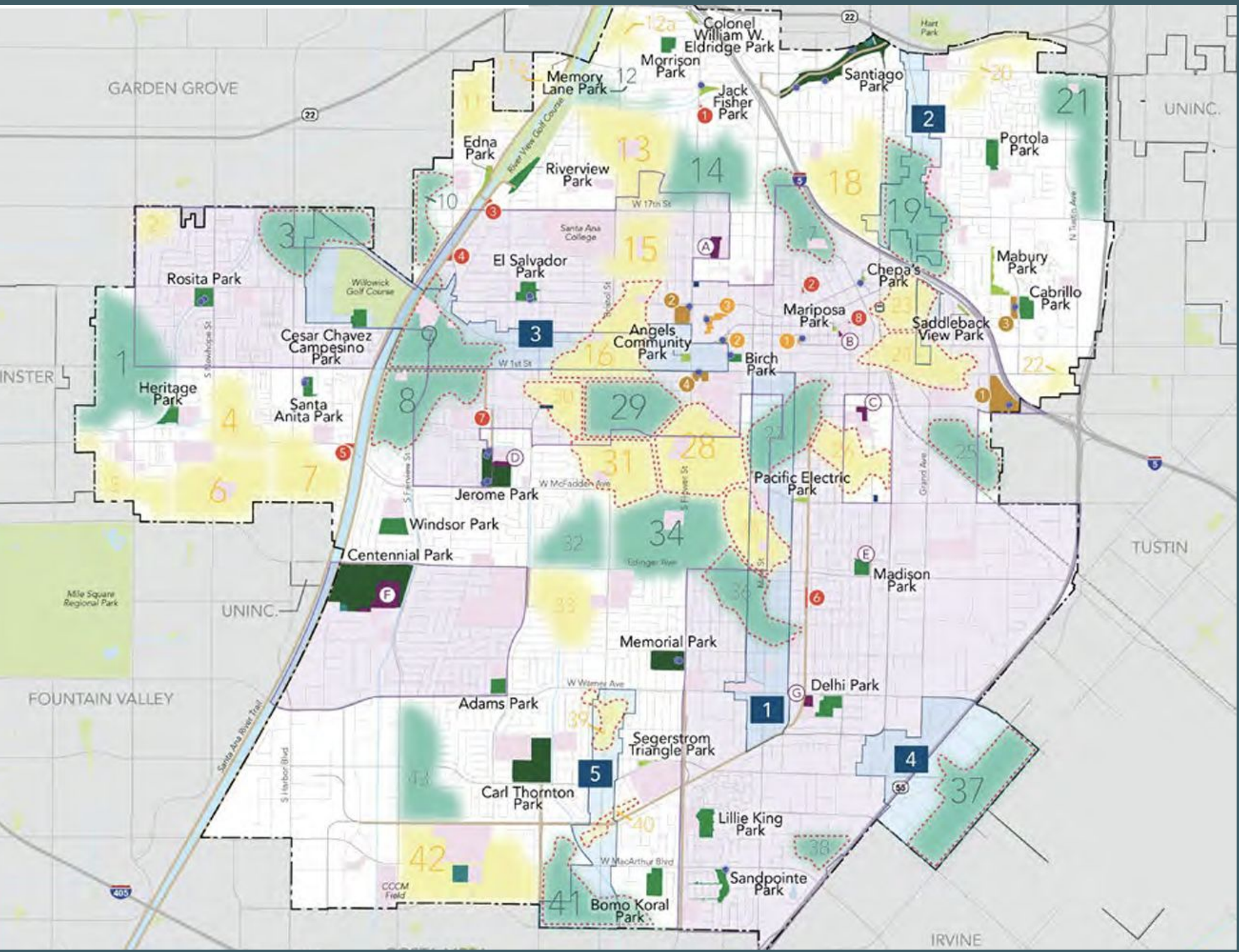




# of regulated sites  
within 1 mile

Monroe Elementary: 438  
Century High: 375  
Madison Elementary: 334  
Kennedy Elementary: 326





# MAP 4-2: KEY PARK SYSTEM NEEDS

- Joint-Use School Sites**
    - (A) Willard Intermediate School
    - (B) Garfield Elementary School
    - (C) Roosevelt-Walker Elementary School
    - (D) Monte Vista Elementary School
    - (E) Madison Elementary School
    - (F) Godinez High School
    - (G) Monroe Elementary School
  - Pocket Parks**
    - 1 Sarah May Downie Herb Garden
    - 2 French Park
    - 3 17th Street Triangle Park
    - 4 Fairview Triangle Habitat Restoration
    - 5 McFadden Triangle Park
    - 6 Maple and Occidental Exercise Park
    - 7 Friendship Park
    - 8 Garfield Fitness Park
  - Urban Plazas**
    - 1 Plaza Calle Cuatro
    - 2 Sasscer Park
    - 3 Civic Center
  - Special Use Facilities**
    - 1 Santa Ana Zoo at Prentice Park
    - 2 Santa Ana Stadium
    - 3 Cabrillo Tennis Center
    - 4 Neal Machander Tennis Center
  - Legend**
    - City Parks and Facilities**
      - Citywide Park
      - Community Park
      - Neighborhood Park
      - Trail Corridor
      - Major Recreation Facility
    - Other City Parks and Facilities**
      - Pocket Park
      - Urban Plaza
      - Special Use Facility
    - Other City Park Resources**
      - Park Resource
      - Undeveloped Park
      - Joint-Use School Site
    - Local and Regional Resources**
      - Parks and Facilities Provided by Others
      - Major Roads + Freeways
      - Rail Line/Metro Rail
      - City of Santa Ana
      - Surrounding Cities and Unincorporated Areas
      - School
      - Waterbodies
    - General Plan Priority Areas**
      - Environmental Justice (EJ) Communities
      - Land Use Element (LUE) Focus Areas
        - 1 South Main Street
        - 2 Grand Avenue / 17th Street
        - 3 West Santa Ana Boulevard
        - 4 55 Freeway / Dyer Road
        - 5 South Bristol Street
    - Unserviced Areas**
      - JUAs/ Other Opportunities Identified
      - Parkland Acquisition Likely Needed
      - High Severity of Need
- Corresponds to Equity Analysis (see Table 4-2 for detail)

Population growth in Santa Ana is anticipated to increase by 8.3% by 2030, adding significant strain onto the City's existing park, facilities, and trails systems.

- 2019: 334,774
- 2030: 362,591





Planning and Building Agency  
www.santa-ana.org/pb  
Item # 3

City of Santa Ana  
20 Civic Center Plaza, Santa Ana, CA 92701  
Planning Commission Staff Report  
December 12, 2022

**TOPIC:** Zoning Ordinance Amendment No. 2022-03 – Updates to various sections of Chapter 41 (Zoning) of the Santa Ana Municipal Code (SAMC).

### Noxious Uses

The SAMC regulates industrial and noxious land uses through permitting them in industrial zoning districts. However, the SAMC does not provide additional regulation for uses that have a regional, state, or federal permit to emit or store or process hazardous waste that are in close proximity to sensitive land uses.

1. Create new “noxious uses” section to require approval of a conditional use permit for industrial type uses located within 500 feet of a sensitive land use that requires a permit to discharge air contaminants or process or store regulated chemicals or substances (Sec. 41-199.4).
2. Update the Non-Conforming section of the Zoning Code to require a conditional use permit for noxious uses whenever an existing non-conforming business changes ownership and requires a new certificate of occupancy. Additionally, require businesses with these type of permits to remain in compliance with applicable laws or lose their





## Strategies to Reduce Air Pollution Exposure Near High-Volume Roadways

Strategies that reduce traffic emissions

1. Speed reduction mechanisms including roundabouts
2. Traffic signal management
3. Speed limit reductions on high-speed roadways (>55 mph)

Strategies that reduce the concentration of traffic pollution

4. Urban design that promotes air flow and reduces the concentration of pollution along street corridors
5. Solid barriers such as sound walls
6. Vegetation that reduces the concentration of pollution

Strategies that remove pollution from indoor air

7. Indoor high efficiency filtration that removes pollution from the air

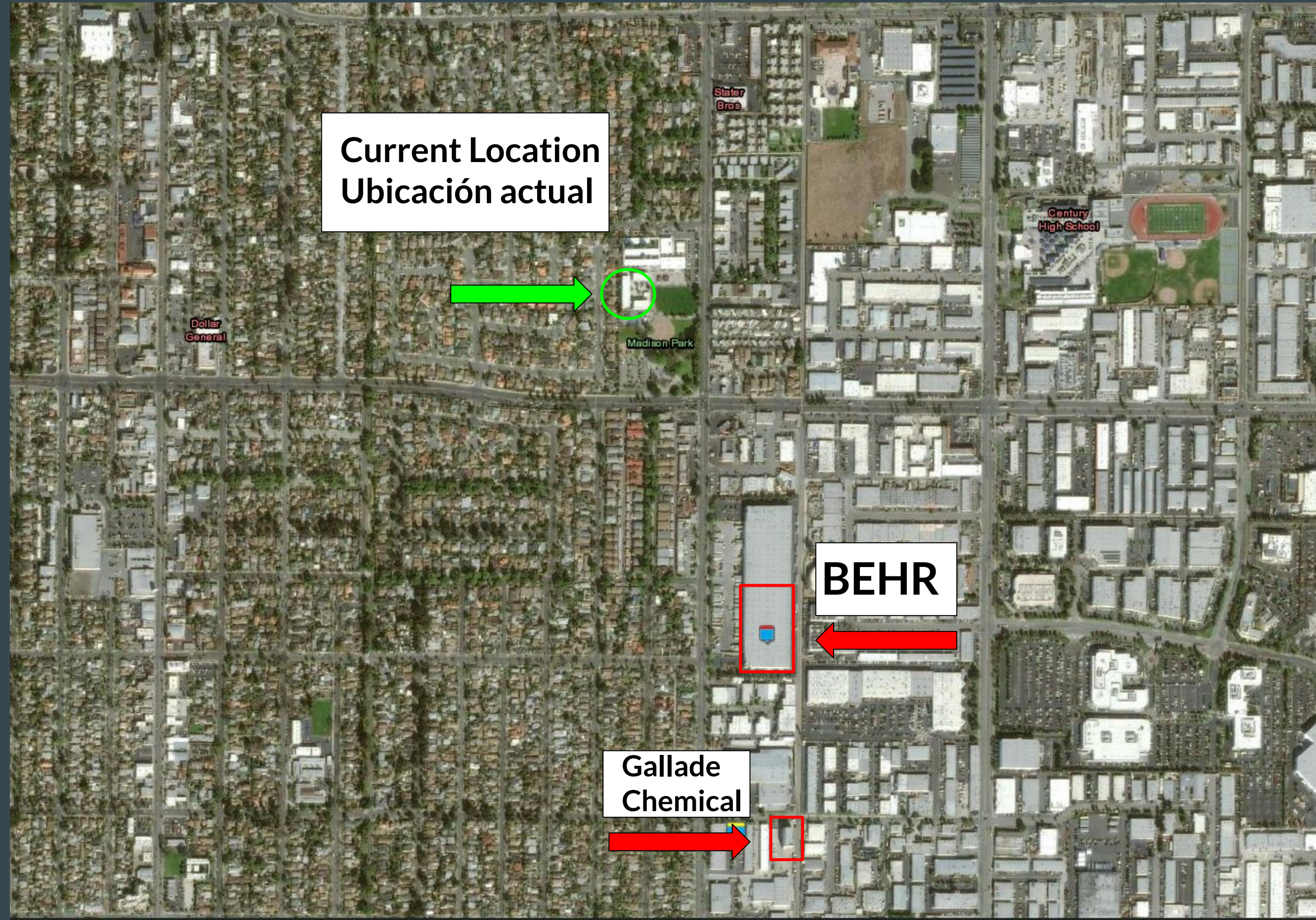


# What RMPs are in Santa Ana? ¿Qué instalaciones hay en Santa Ana?

RMP 1: BEHR Process Corp,  
Standard Distribution Facility  
(instalación de distribución)

RMP 2: Gallade Chemical Inc's  
chemical storage building  
(edificio de almacenamiento  
de productos químicos)

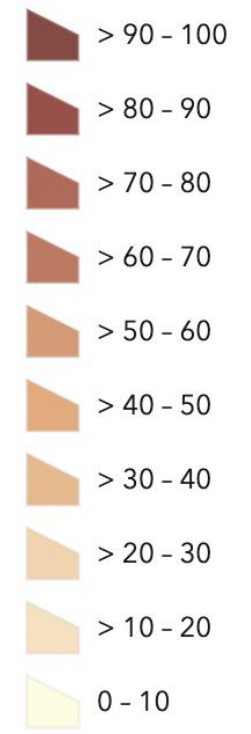
Our current location at  
Madison Elementary School. /  
Nuestra ubicación actual en la  
escuela Madison.





- Ozone
- PM2.5
- Diesel Particulate Matter
- Drinking Water Contaminants
- Children's Lead Risk from Housing
- Pesticide Use
- Toxic Releases from Facilities

Cleanup Sites Percentile

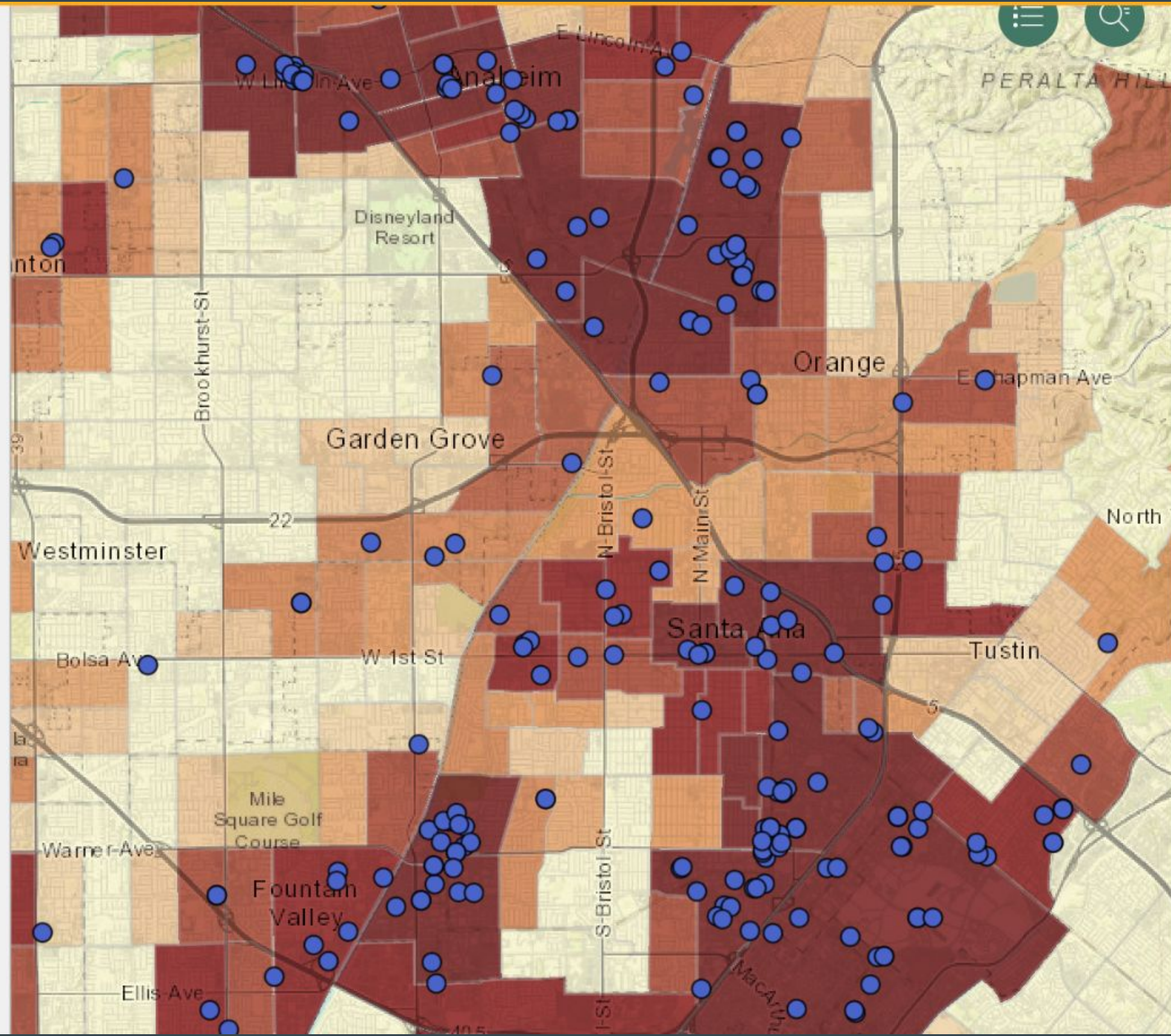


### What are Cleanup Sites?

Cleanup sites are places that are contaminated with hazardous chemicals and require clean up by the property owners or government. Chemicals at cleanup sites can move through the air or groundwater. People living near these sites have a greater potential to be exposed to chemicals from the sites than people living further away.

Some studies have shown that neighborhoods with cleanup sites are generally poorer and have more people of color than other neighborhoods. The land may take many years or decades to clean up, reducing possible benefits to the community.

More information can be found in the [Cleanups chapter](#) in the CalEnviroScreen 4.0 report and the [Cleanups indicator page](#).







## JUSTICE40

A WHOLE-OF-GOVERNMENT INITIATIVE

 ENVIRONMENTAL JUSTICE

*“We’ll create good jobs for millions of Americans...and we’ll do it all to withstand the devastating effects of climate change and promote environmental justice.”*

PRESIDENT JOE BIDEN, 2022 STATE OF THE UNION

### What is the Justice40 Initiative?

**F**or the first time in our nation’s history, the Federal Government has made it a goal that 40 percent of the overall benefits of certain Federal investments flow to disadvantaged communities that are marginalized, underserved, and overburdened by pollution. President Biden made this historic commitment when he signed Executive Order 14008 within days of taking office.

# U.S. ATTORNEY ANNOUNCES ENVIRONMENTAL JUSTICE COORDINATOR FOR CENTRAL CALIFORNIA

 PUBLIC NEWS /  OCT 03 2022 07:11 AM /  BY /  5 COMMENTS /  READS 1403

*By the Department of Justice (DOJ)*

Martin Estrada, the United States Attorney for the Central District of California, announced today the creation of an Environmental Justice Coordinator and the prioritization of Environmental Justice Enforcement under his leadership as top federal prosecutor in the nation’s most populous federal judicial district.

Assistant United States Attorney Amanda M. Bettinelli has been selected to serve as the office’s Environmental Justice Coordinator. In this role, she will focus on protecting the rights of district residents who are disproportionately burdened by environmental and health hazards, including those affected by illegal dumping, soil contamination and child lead exposure.



# Non-exhaust Source Emissions Factors



## BRAKE WEAR

- Brake materials
- Driving conditions and history
- Brake pad temperatures
- Vehicle load



## TIRE/ROAD WEAR

- Tire materials
- Driving behavior
- Road condition

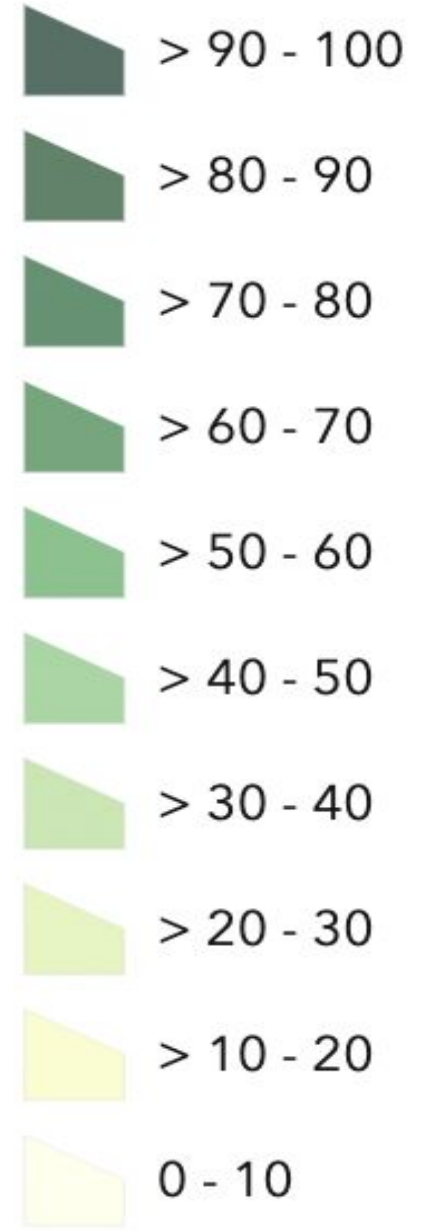


## ROAD-DUST RESUSPENSION

- Urban vs rural area
- Season
- Proximity to crustal materials
- Driving speed



### Asthma Percentile

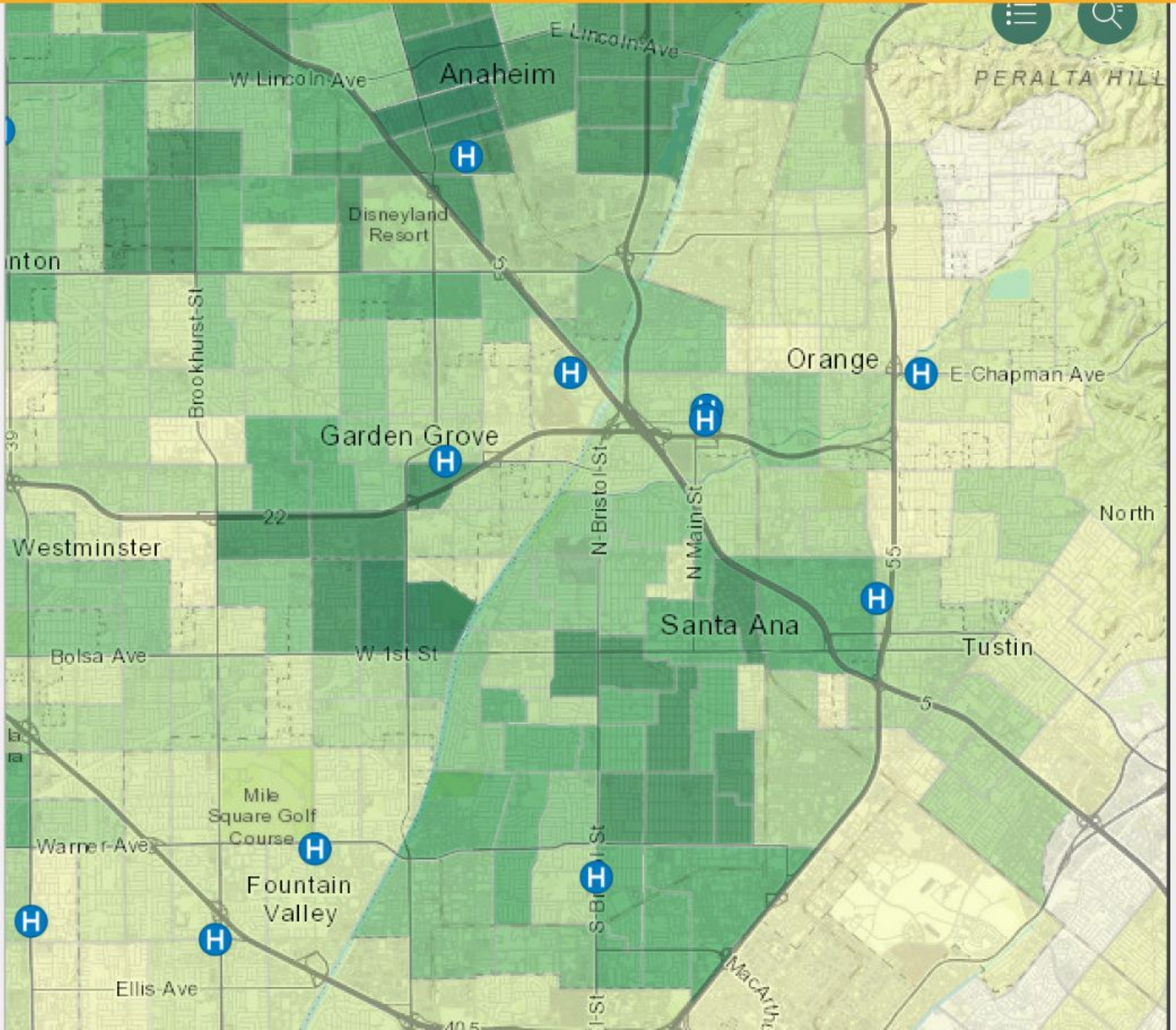


### What is Asthma?

Asthma is a disease that affects the lungs and makes it hard to breathe. Symptoms include breathlessness, wheezing, coughing, and chest tightness. The causes of asthma are unknown but both genetic and environmental factors can be involved.

Five million Californians have been diagnosed with asthma at some point in their lives. People with asthma can be especially susceptible to pneumonia, flu and other illnesses. Outdoor air pollution can trigger asthma attacks.

More information can be found in the [Asthma chapter](#) in the CalEnviroScreen 4.0 report and the [Asthma indicator page](#).





Contact: Kim Fortun, [kfortun@uci.edu](mailto:kfortun@uci.edu)

