
From: Porfirio Arguellez III/FTEHSF
Sent: Friday, February 26, 2016 4:40 PM
To: T.P. Tai/TXPO; Jesse Chang/TXLLDPE; Arturo Bazan/FTTRIN; S.C. Chang/TXHDPE; Yu-Lin Kung/FTECCV
Cc: Rick Crabtree/FTOLSF; Matt Brogger/FTEHSF
Subject: Pellet/Powder Gate 2 Road, RCRS & PE2/PP2 Railcar Loading Area
Attachments: Gate 2 Road, PE2-PP2 Loading & RCRS Audit.pdf

All,
Attached is the Pellet/Powder audit conducted this afternoon.

Porfirio Arguellez III
Environmental Specialist II-Water
Environmental Dept.
Formosa Plastics Corporation-Tx
Office: 361-987-7645
Cell: 361-491-9900

FORMOSA PLASTICS CORPORATION, TEXAS

Traffic Pellet/Powder Observations

Gate 2 Road, Railcar Repair Shop
Area, PE2/PP2 Railcar Loading

Conducted: February 26, 2016

Observations

- ▣ LLDPE WAREHOUSE
 - Pile of pellets still visible on pavement. Pellets have been swept into pile but not picked up.
- ▣ PE1/PP1 BAGGING SHIPPING AREA
 - Weir area, pellets and debris are visible in water.
- ▣ RAILCAR UNLOADING *across from Chlor- Alkali*
 - Pellets visible just beneath outlets of the railcar and also on back side of railcar on pavement.
- ▣ RAILCAR REPAIR SHOP
 - South of RCRS pellets are visible on ground by outlets.
- ▣ PE2/PP2 RAILCAR LOADING
 - Area around loading area, pellets are visible. Pellets are leaking thru concrete cracks onto pavement outside the loading area. Ultimately pellets are visible just past pavement on the ground.
- ▣ RAIL LINE
 - Pellets are visible on rail line north of PE2/PP2 railcar loading area. One railcar has all outlets disconnected and open. Some pellets are visible inside outlets and on the white rock.

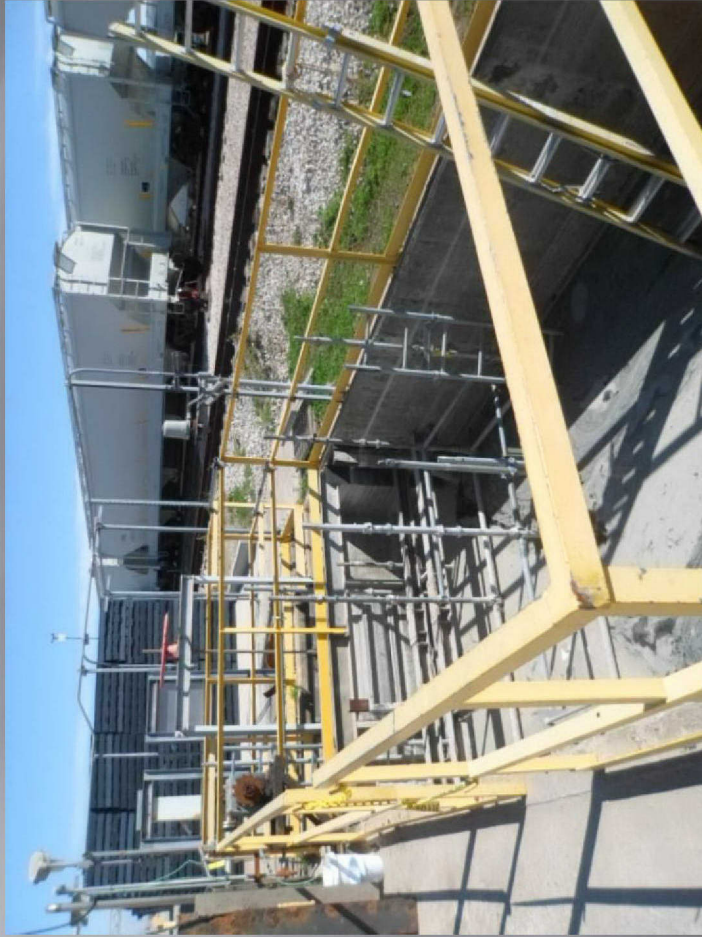
LLDPE WAREHOUSE

SOUTHWEST CORNER OF LLDPE WAREHOUSE, A PILE OF PELLETS IS VISIBLE ON THE PAVEMENT. THIS WAS ALSO OBSERVED ON 2.22.16 AUDIT.



PEI/PP1 BAGGING SHIPPING AREA

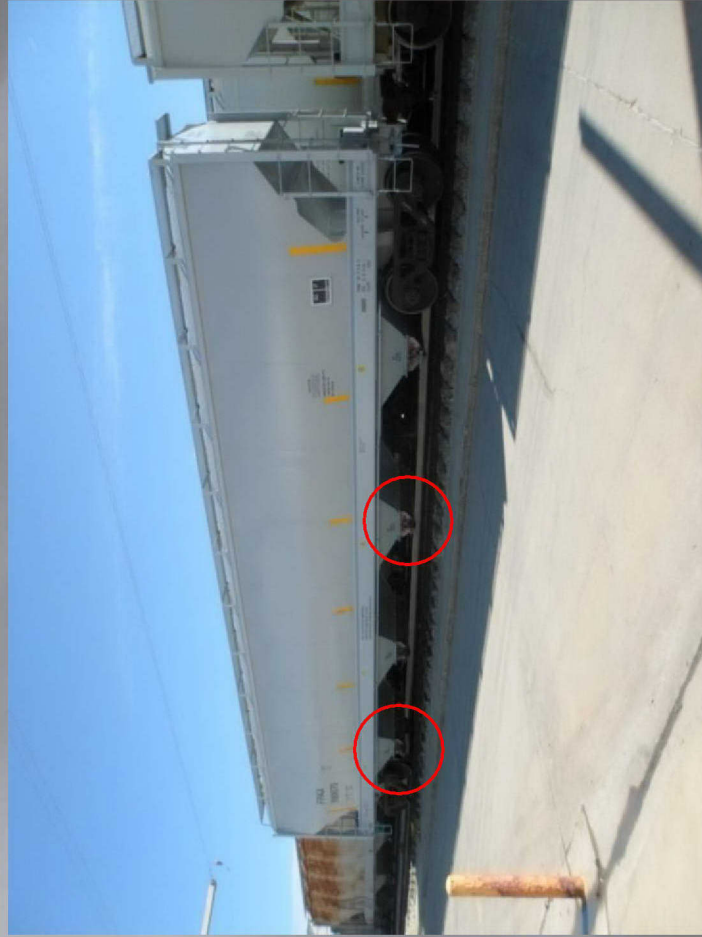
WORK STILL CONTINUES ON THE WEIR. PELLETS ARE VISIBLE FLOATING ON THE WATER AS WELL AS OTHER DEBRIS.



RAILCAR UNLOADING

(ACROSS FROM CHLOR ALKALI)

PELLETS ARE OBSERVED ON THE GROUND JUST UNDERNEATH THE OUTLETS OF THE RAILCAR.



RAILCAR UNLOADING

(ACROSS FROM CHLOR ALKALI)

BACKSIDE OF THE RAILCAR, PELLETS ARE OBSERVED ON THE PAVEMENT.



SIMILAR TO THE OTHER OUTLET FROM PREVIOUS SLIDE, PELLETS ARE OBSERVED ON THE GROUND.



RAILCAR REPAIR SHOP

CLOSER IMAGE OF PELLETS ON THE GROUND. NEXT PHOTO SHOWS CLOSER IMAGE OF PELLETS ON WHITE ROCK.



RAILCAR JUST SOUTH OF THE RAILCAR REPAIR SHOP, PELLETS ARE OBSERVED ALONG THE TRACKS.



RAILCAR REPAIR SHOP

CLOSER IMAGE OF PELLETS.



PE2/PP2 RAILCAR LOADING

EAST SIDE OF THE RAILCAR LOADING AREA, PELLETS ARE VISIBLE ALL OVER THE PAVEMENT. PELLETS ARE ALSO LEAKING THRU THE CRACKS OF THE CONCRETE FROM THE LOADING AREA.



PE2/PP2 RAILCAR LOADING

PELLETS ARE VISIBLE ALONG THE RAIL LINE, ULTIMATELY PELLETS ARE VISIBLE JUST PAST THE PAVEMENT ON THE GROUND.



PE2/PP2 RAILCAR LOADING

SOUTH OF THE RAILCAR LOADING AREA, PELLETS ARE VISIBLE ON THE PAVEMENT. THERE IS A SCREEN WHICH PROTECTS THE DRAIN, HOWEVER CLEANING EFFORTS IN THIS AREA HAVE NOT BEEN PERFORMED.



PE2/PP2 RAILCAR LOADING

CLOSER IMAGE OF DRAIN.



RAIL LINE

(NORTH OF PE2/PP2 RAILCAR LOADING AREA)

PELLETS ARE OBSERVED ON THE TRACKS AND ALSO ALONG THE RAIL CARS.



RAIL LINE

(NORTH OF PE2/PP2 RAILCAR LOADING AREA)

OUTLETS ON THIS RAILCAR ARE ALL OPEN, THERE ARE TWO OUTLETS WHERE PELLETS ARE VISIBLE, PELLETS HAVE SPILLED ONTO THE GROUND.



RAIL LINE

(NORTH OF PE2/PP2 RAILCAR LOADING AREA)

OUTLET IS OPEN, PELLETS ARE VISIBLE.

