
From: Porfirio Arguellez III/FTEHSF
Sent: Friday, March 11, 2016 4:32 PM
To: T.P. Tai/TXPO; Jesse Chang/TXLLDPE; Arturo Bazan/FTTRIN; S.C. Chang/TXHDPE; Yu-Lin Kung/FTECCV; John Hyak/TXEHS; Robert Loflin/FTTRIN
Cc: Rick Crabtree/FTOLSF; Matt Brogger/FTEHSF
Subject: Pellet/Powder Gate 2 Road, RCRS, PE2/PP2 Railcar Area & Inland Traffic
Attachments: Gate 2 Road, PE2-PP2 Loading & RCRS Audit 2.pdf

All,
Weekly audit was performed this afternoon. PE2/PP2 loading area had several observations. Inland Traffic was also included in audit as caustic was observed by tracks.

Porfirio Arguellez III
Environmental Specialist II-Water
Environmental Dept.
Formosa Plastics Corporation-Tx
Point Comfort, Texas 77978
Office: 361-987-7645

FORMOSA PLASTICS CORPORATION, TEXAS

Traffic Pellet/Powder & Misc.
Observations

Gate 2 Road, Railcar Repair Shop
Area, PE2/PP2 Railcar Loading
& Inland Traffic

Conducted: March 11, 2016

Observations

- ▣ PE2/PP2 RAILCAR LOADING AREA
 - Pellets observed in white rock around railcars
 - Oil leak observed on tracks

- ▣ STORMWATER OUTFALL 009
 - Pellets upstream of the gate by culvert

- ▣ STORMWATER OUTFALL 008
 - Pellets observed upstream of gate. Containment boom used to contain pellets for cleaning.

- ▣ PE1/PP1 BAGGING-SHIPPING AREA
 - Weir: Pellets and powder are visible in water and also on structure.

- ▣ INLAND TRAFFIC
 - Caustic visible on white rock by tracks.

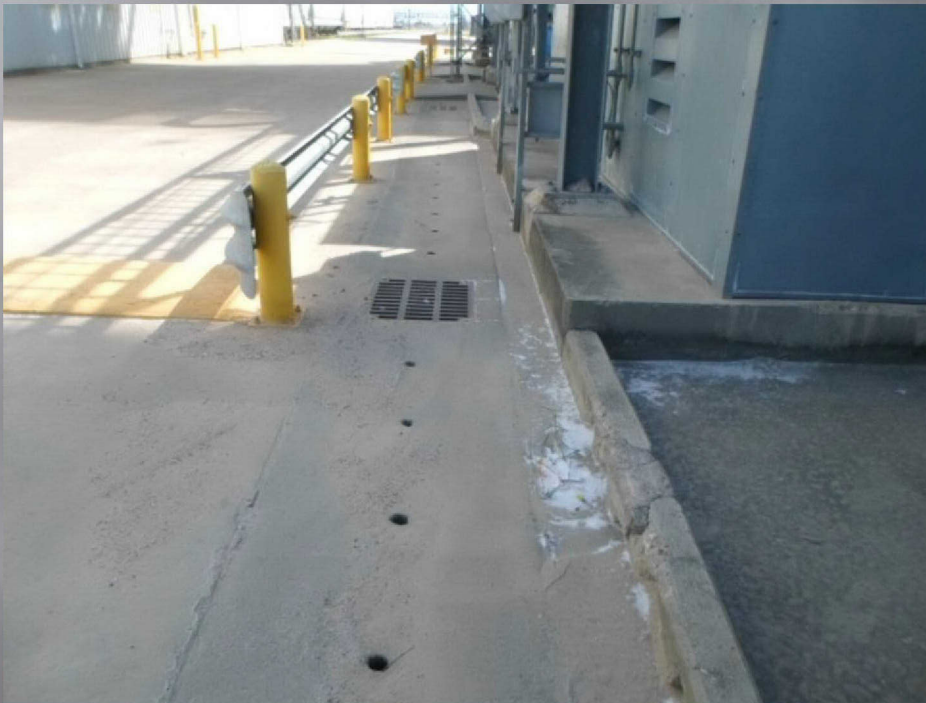
PE2/PP2 RAIL LOADING AREA

PELLETS AND POWDER ARE VISIBLE ALONG THE LEFT SIDE OF THE STREET. NEXT PHOTO GIVE A CLEARER IMAGE.



PE2/PP2 RAIL LOADING AREA

CLOSER IMAGE. NOTE THAT HOLES ON PAVEMENT DRAIN TO THE INTERNAL DITCH FOR PROCESS AREA. WATER FROM THIS DITCH IS DISCHARGE D INTO OUTFALL 009.



PELLETS ARE OBSERVED IN THIS AREA (SOUTH END OF RAILCAR LOADING AREA) BY AN OUTLET OF THE RAILCAR AND ALSO AT THE CORNER OF THE PAVEMENT. NEXT PHOTOS PROVIDE CLOSER IMAGE.



PE2/PP2 RAIL LOADING AREA

CLOSER IMAGES FROM PREVIOUS PHOTO.



PE2/PP2 RAIL LOADING AREA

PRIOR TO THIS RAILCAR ENTERING THE LOADING AREA, PELLETS ARE OBSERVED ON ROAD



PE2/PP2 RAIL LOADING AREA

PELLETS OBSERVED JUST PAST THE OUTLET OF THE RAILCAR ON SOUTH END OF THE LOADING AREA.



PELLETS OBSERVED ON GROUND BY OUTLET PRIOR. THIS CAR WAS NORTH OF INLAND TRAFFIC CHEMICALS AREA. NEXT PHOTOS PROVIDE CLOSER IMAGE.



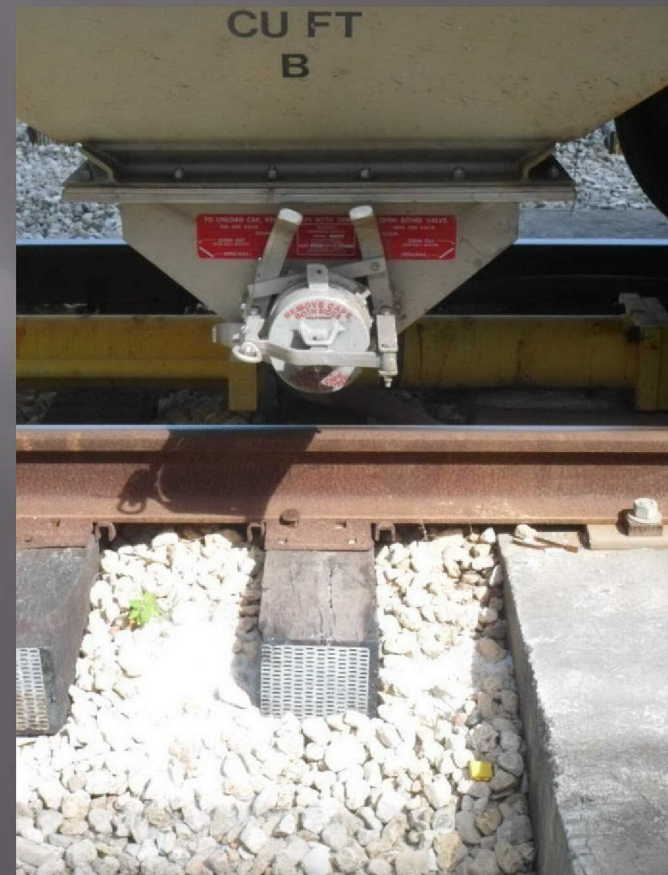
PE2/PP2 RAIL LOADING AREA

CLOSER IMAGE OF PELLETS.



PE2/PP2 RAIL LOADING AREA

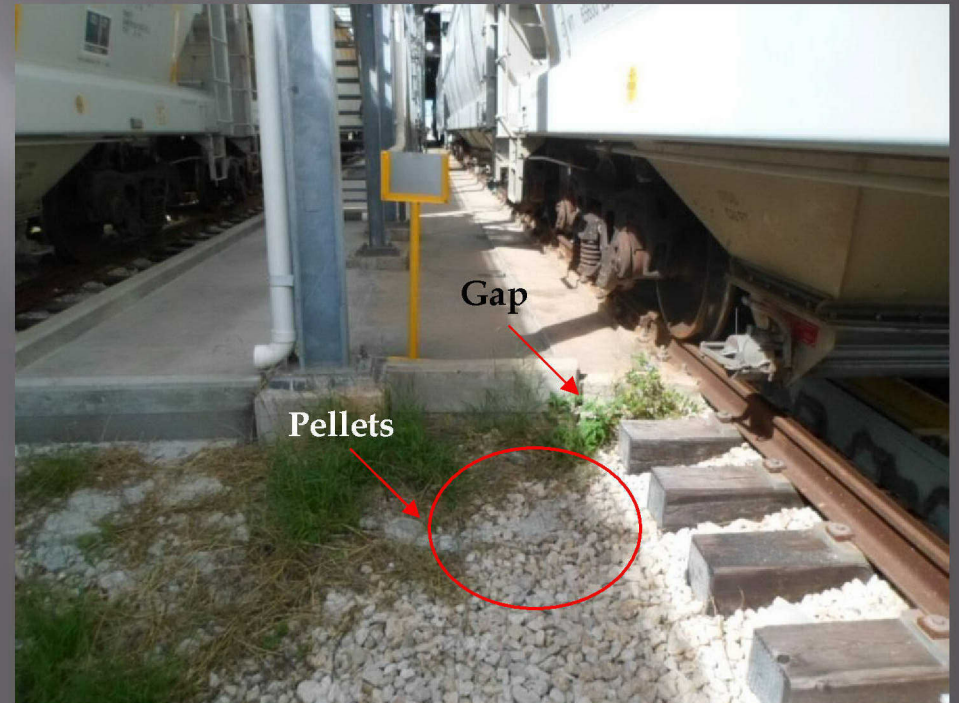
BELOW THE HATCH, PELLETS ARE VISIBLE ON THE WHITE ROCK. NEXT PHOTO PROVIDES CLOSER IMAGE.



PE2/PP2 RAIL LOADING AREA

CLOSER IMAGE OF PREVIOUS PHOTO.

IMMEDIATELY SOUTH OF THE PAVEMENT, PELLETS ARE OBSERVED IN THE WHITE ROCK. FURTHER OBSERVATIONS PROVIDES THAT THERE IS A GAP IN THE CONTAINMENT WALL.



PE2/PP2 RAIL LOADING AREA

CLOSER IMAGE OF PELLETS SOUTH OF PAVEMENT.



THIS AREA OF THE RAIL LINE HAS OIL THAT IS VISIBLE ON TRACKS ON BALLAST. CLEANUP EFFORTS HAVE BEGUN BUT NOT COMPLETED.



PE2/PP2 RAIL LOADING AREA

CLOSER IMAGE OF LEAK.



STORM WATER OUTFALL 009

UPSTREAM OF OUTFALL 009, PELLETS ARE OBSERVED IMMEDIATELY PASTE A CULVERT. THE SECOND PHOTO PROVIDES CLOSER IMAGE OF PELLETS.



STORMWATER OUTFALL 008

UPSTREAM OF THE CONTAINMENT BOOM PELLETS HAVE ACCUMULATED . SECOND PHOTO PROVIDES CLOSER IMAGE OF PELLETS.



PET/PP1 BAGGING SHIPPING AREA

PELLETS AND POWDER HAVE ACCUMULATED IN THE SUMP WHERE THE WEIR WAS. NO WORK IS BEING CONDUCTED IN THIS AREA. THE NEXT PHOTO SHOWS POWDER AND PELLETS THAT HAVE STUCK TO STRUCTURE.



PET/PP1 BAGGING SHIPPING AREA

IMAGE OF POWDER AND PELLETS ON STRUCTURE.



INLAND TRAFFIC

CAUSTIC IS VISIBLE IN THE WHITE ROCK WEST OF THE TRACKS AT INLAND TRAFFIC. PER DISCUSSION WITH TRAFFIC PERSONNEL A CLEAN UP EFFORTS WILL BEGIN SOON.

